

Safe and effective treatments



Courtesy of Dr. Simón

Facial photorejuvenation - Before and after 3 treatments



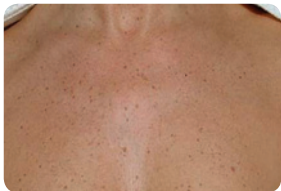
Courtesy of Dr. Simón

Photorejuvenation on hands - Before and after 1 treatment



Courtesy of Dr. Suzuki

Solar lentigines - Before and after 2 treatments



Courtesy of Dr. Dierickx

Photorejuvenation on neck - Before and after 2 treatments



Courtesy of Jens Petersen

Photorejuvenation - Before and after 3 treatments



See the treatment

Sun-damaged skin

CLINICALLY PROVEN
SAFE AND EFFECTIVE



Ellipse A/S

Agern Allé, 11 DK-2970
Hørsholm, Denmark
+45 45 76 88 08

www.ellipse.com

ellipselasers.wordpress.com
 facebook.com/Ellipse.Denmark
 youtube.com/ellipsedenmark

Available from:

Ellipse is a producer of light-based solutions for medical and cosmetic conditions. Ellipse has gained the acclaim of doctors and beauticians worldwide for the quality of products and services. © Ellipse A/S. All rights reserved.

1PLS7083-A03



Advanced I²PL & Laser
skin solutions



Most people want to keep a young and fresh look

Our skin ages due to sun exposure and decreased production of collagen. Ellipse treatments of sun-damaged skin (Skin Rejuvenation or Photorejuvenation) help you keep a younger and fresher look.

How does Ellipse treatment work?

Ellipse treatments of sun-damaged skin make your skin look smoother by removing age spots, other uneven pigmentation and diffuse redness. Your skin texture is also improved and many women report that it becomes easier to apply makeup. Facial treatments are most popular, but all parts of the body can be treated.

To do this, short, safe bursts of intense pulsed light (called I²PL technology by Ellipse, but often referred to as a laser) are directed at the skin. The system filters the light to ensure the wavelengths used are absorbed by haemoglobin in the fine blood vessels and melanin in the age spots. When cells containing a lot of melanin or haemoglobin are treated, the target heats up and is destroyed within a few thousandths of one second.

Can I be treated?

Treatments are most efficient in patients with light skin who are not suntanned at the time of the treatment. If your skin is less tanned, the contrast between the age spots/blood vessels and background colour of the skin is greater, making treatment easier. However, Ellipse has pre-programmed settings for different skin types that deliver the correct energy output for your complexion.

How long does an Ellipse treatment take?

A full-face treatment takes less than 20 minutes. You should see an improvement after the first treatment, but up to 3 treatments may be required to achieve the full effect.

Does the treatment hurt?

No anaesthetics are required, and many patients describe the treatment as practically pain-free, like a flick from a rubber band followed by a sensation similar to the feeling of gentle warmth after a day on the beach.

Do I need to take special precautions before and after treatment?

The light used is completely safe, visible light. It is, however, important to avoid tanning (sun, solarium or self-tanning products) before and during the treatment period. Otherwise your tanned skin will absorb more light, which makes treatment less effective and less comfortable. Generally, no special care is necessary after treatment, but people with sensitive skin may benefit from applying a cold

compress (a cold damp cloth) to the face immediately after treatment or from using an ointment prescribed by the doctor. After treatment, you should avoid sun exposure for 30 days, even if there is no sign of inflammation in the treated area. Use sun protection (minimum SPF 30) if sun exposure cannot be avoided.

What can I expect?

You may notice that the skin looks a little “dirty” for a few days following treatment. After that you will find that your skin looks smoother and fresher. You might choose to have 1-2 annual maintenance treatments in order to keep your youthful appearance.

How can I be sure Ellipse is safe and effective?

Clinical trials documenting Ellipse’s safety and effectiveness were carried out by leading doctors prior to the launch of the treatment, and these were published in respected, referenced medical journals. You are welcome to view these scientific papers on the Ellipse website at www.ellipse.com.

